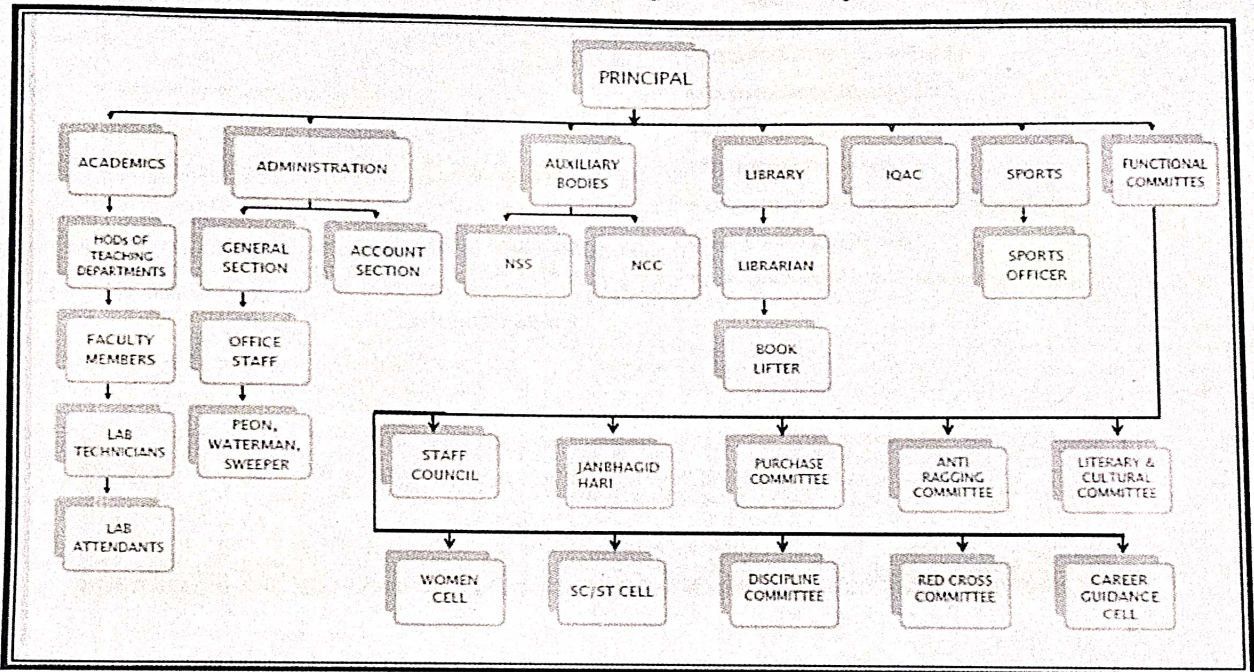


कार्यालय-प्राचार्य
 आचार्य पंथ श्री गृध्र मुनि नाम साहेब शासकीय स्नातकोत्तरमहाविद्यालय, कवर्धा
 (अग्रणी महाविद्यालय) जिला-कबीरधाम, छत्तीसगढ़
 E-mail:govtpgcollege.kawardha@gmail.com

Institutional Strategic/ Perspective plan



[Signature]
 A.P.S.G.M.N.S.
 Govt.P.G. College
 Kawardha

Leadership at Various Levels



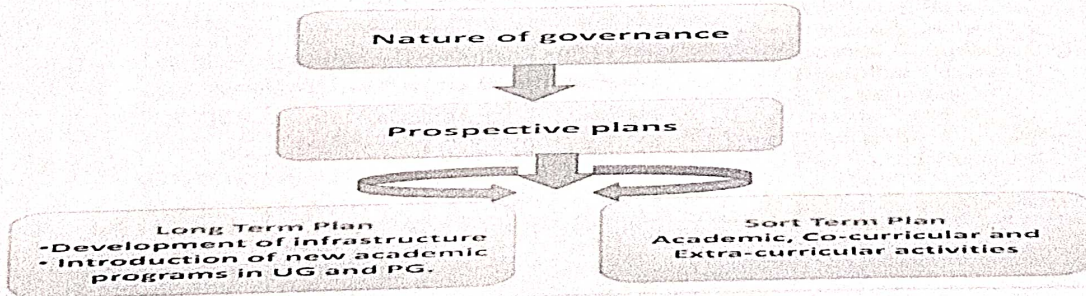
- Member BOS (Board of Study)/CBOS (Central Board of Study)
- Admission In charge/Mentor
- Organizing Committee Chairman /Member for Seminar/Webinar
- Academic Coordinator (UG, PG, etc.) In charge in University Exams
- University Sports and Cultural Events
- NCC/NSS Program Officer
- Departmental In charge



- NSS/NCC Team Leader
- Representative in JB
- Student Forum in each Department
- Student Council
- Organization of Extra curricular/and co curricular programs
- Participation in professional activities

Governance, Leadership and Management

Governance, Leadership And Management



[Signature]
प्राचार्य
A.P.S.G.M.N.S.
Govt.P.G. College
Kawardha

कार्यालय-प्राचार्य
आचार्य पंथ श्री गृध्र मुनि नाम साहेब शासकीय स्नातकोत्तरमहाविद्यालय, कवर्धा
(अग्रणी महाविद्यालय) जिला-कबीरधाम, छत्तीसगढ़

E-mail:govtppgcollege.kawardha@gmail.com

Leadership at Various Levels



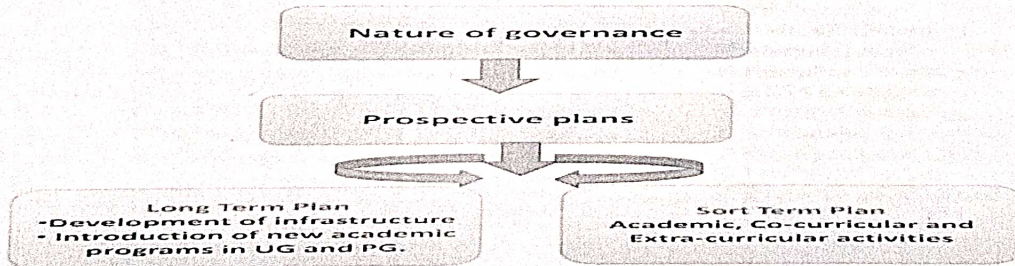
- Member BOS (Board of Study)/CBOS (Central Board of Study)
- Admission In charge/Mentor
- Organizing Committee Chairman /Member for Seminar/Webinar
- Academic Coordinator (UG, PG, etc.) In charge in University Exams
- University Sports and Cultural Events
- NCC/NSS Program Officer
- Departmental In charge

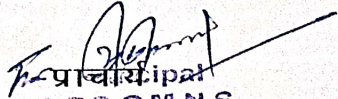


- NSS/NCC Team Leader
- Representative in JB
- Student Forum in each Department
- Student Council
- Organization of Extra curricular/and co curricular programs
- Participation in professional activities

Governance, Leadership and Management

Governance, Leadership And Management




The Principal
A.P.S.G.M.N.S.
Govt.P.G. College
Kawardha

Institutional Strategies for Mobilization of Funds

The main sources of funds for the college are as follows:

- State Government Funding
- UGC
- RUSA
- Janbhagidari fee
- Self-Finance fee
- University funding for conducting an examination

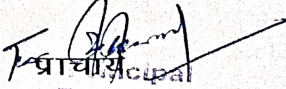
FINANCIAL MOBILIZATION AND
MANAGEMENT

Internal Audit
External Audit – CA,
Directorate of Higher
Education, AG office

Decentralization and Participative Management Various Cells & Committees

- Internal Quality Assurance Cell (IQAC)
- Exam Cell
- Internal Exam & Assessment Committee
- Academic Audit Committee
- Anti-Ragging/ Squad Committee
- Grievance Redressal Cell
- Student Union Committee
- Purchase Committee
- RTI/ Lok Sewa Guarantee/Court Case Cell
- Internal Examination Complain Cell
- Physical Verification Cell
- Alumni Cell
- Building Maintenance Committee
- Student/Parent Committee
- Girls Common Room Committee
- Canteen Committee

- ✓ Janbhagidari Samiti (JBS)
- ✓ NAAC Cell
- ✓ Career Guidance & Placement Cell
- ✓ Cultural Committee
- ✓ Library Committee
- ✓ Press and Media Committee
- ✓ Scholarship Committee
- ✓ Sports Committee
- ✓ AF Committee
- ✓ Write off Committee
- ✓ Internal Complaint Committee
- ✓ Discipline Committee
- ✓ RUSA Committee
- ✓ Website Committee
- ✓ Scholarship Committee
- ✓ Day-Care Committee
- ✓ Feedback Committee
- ✓ Red-cross / Redribbion Committee


A.P.S.G.M.N.S.
Govt.P.G. College
Kawardha